

Mega Speed[®] X9 PRO



X9 PRO Back

2000 FPS 1080P High Speed Camera!

You May Never Use A
PC Connected Camera Again.



Optics not
supplied

Specifications

Work lights:	Built in high power LED work lights.	High Resolution! High Speed!
Temperature range:	0°C to 45°C Operational range. -40°C to +50°C storage range.	
Camera size:	Depth 7.8cm x width 22.8cm x height 12.5cm.	
Camera weight:	Mobile handheld camera. Light weight 1550g / 3.5 lbs with battery.	
Camera battery:	Lithium-ion re-chargeable / removable battery for minimum 5 hrs camera operation with power saving features.	
Input voltage:	14 VDC from wall adapter when required. Camera charges internal battery while plugged in and recording.	
Camera body:	Self contained, hand held with advanced light weight rugged shock absorbing Space Age ABS body.	
WiFi / LAN:	Camera can connect to LAN network and camera has optional WiFi connectivity.	
LCD screen:	Rear high resolution LCD screen. Full touch screen operation and control.	
Image Sensor:	1" color or monochrome 1920 x 1080 format CMOS 10 bit, 11um pixel pitch.	
ISO Value	10,000.	
Low light setting:	25 fps, 40 ms exposure time for pre-capture setup and focus plus built in high power LED work lights.	
High Speed Mode:	2000 fps @ 1920 x 1080 resolution and 100,000 fps at minimum resolution..	
Streaming Mode:	Camera can stream in long record mode to the internal SATA solid state drive	
Shutter speed:	Global electric shutter 2 us to 40 milli-seconds in precise 1-2 us steps for no high speed blur.	
Trigger in:	3 to 48 VDC TTL centre pin positive, manual, external or countdown timer.	
Data Acquisition:	Data acquisition connection of rear of camera to accept outside signal source.	
Input / output ports:	Triggers: Pre / Post, Single Sequence, Multiple Start/Stop & Continuous Mode Trigger, Sync. & ADC.	
Storage Options:	One hot swap SSD, 2 X USB & 2 X SD ports for use with USB flash drives and SD cards.	
File Formats:	User can save images in AVI, JPEG, BMP, TIFF, RAW and DNG file formats.	
Video Out Formats:	HDMI interface for TV / monitor and one optional 3GSDI out port.	
Optical interface:	Standard "C" Mount. "F" Mount is optional.	
Solid State Drive:	One hot swap re-moveable 640 GB Solid State Drive.	
Removable storage:	One solid state drive, 2 USB ports & 2 SD ports.	
Strobe/ Sync out:	3.3 VDC TTL via multi pin connector center pin positive, active high.	
Tripod Support:	Camera has integrated ¼ x 20 tri-pod thread.	
Camera RAM:	16 GB (Giga Byte) internal high speed internal image buffer memory.	
IRIG B:	Optional IRIG B time code ready via multi pin connector for IRIG B time stamping on recorded images.	
PC software:	Ships with Camera Control for image transfer, object tracking, image analysis, video editing software.	
PC requirements:	2GHZ, 8 GB RAM. 1 USB and one Gig E connection. (Only needed if you connect camera to a PC)	
PC interface:	Gigabit Ethernet for full camera control and downloading files from the camera's solid state drive. User can also remove the SSD and connect it to the PC with the supplied USB DOC cable.	

Sensor Size Comparison

The Grey area is the size of a standard 1280 x 1024 mega pixel camera.

Yellow area is the X9 size increase over the standard mega pixel camera sensor.

Mega Speed[®] X9 PRO

FEATURES

A Portable Hand-Held High Speed Camera For Lab Or Field Use. No PC, No Lights, No Cables Required!

Rugged, impact resistant, shock protected, high strength injection molded case

Industry standard "C" mount or optional "F" mount for easy lens selection

Re-moveable solid state drive for years of worry free performance and convenient memory upgrades



Convenient neck strap mounts for added comfort while recording

Ergodynamic over-molded rubber hand grips prevent accidentally dropping your camera

Built in high power LED work lights. No need to drag around or plug in extra work lights

Optics not supplied

Large 6" screen for a clear view of your recordings

Several detachable and on-board file storage options like SDHC, USB or hot-swap solid state drives

HDMI & USB mouse ports for remote viewing the camera in confined spaces

Gigabit LAN control for when you want to control the camera from your PC



Sync in/ sync out, triggers, frame marker ADC & IRIG-B input options available

Intelligent charging module charges the battery while recording

Over-molded rubber screen bumper protects the high resolution touch screen

1/4 x 20 TPI tri-pod mounts for secure camera mounting

Recording rates from 30 fps to 100,000 fps

All Inclusive 3 year Warranty

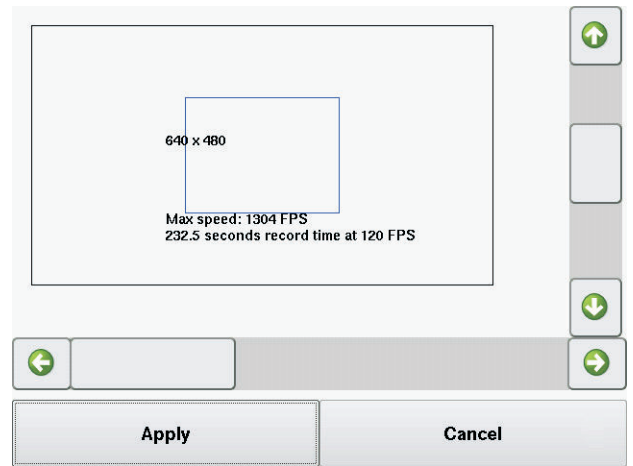
Mega Speed[®] X9 PRO

FEATURES

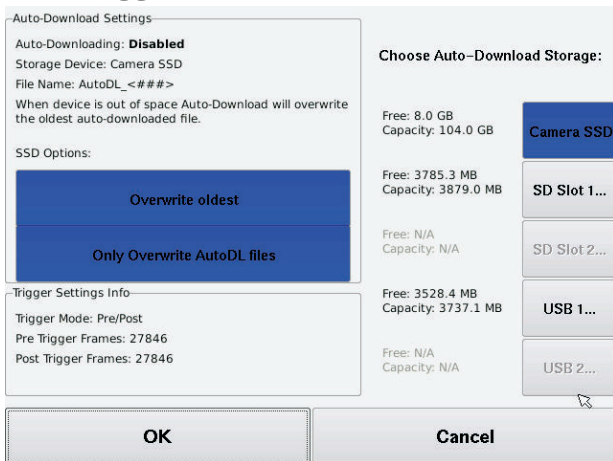
Easy To Follow Menu For All Camera Settings



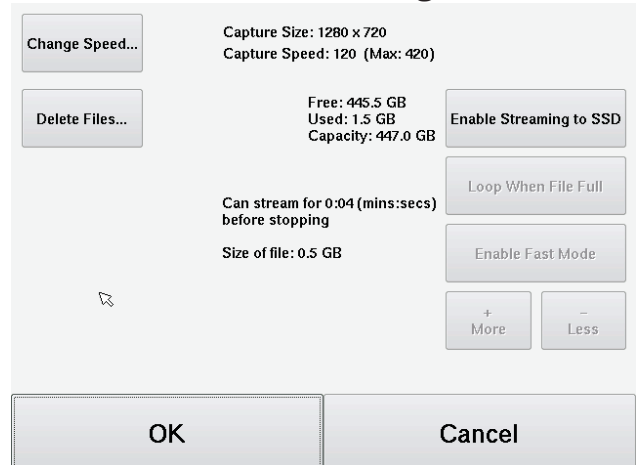
Select Any Image Size To Match your Application



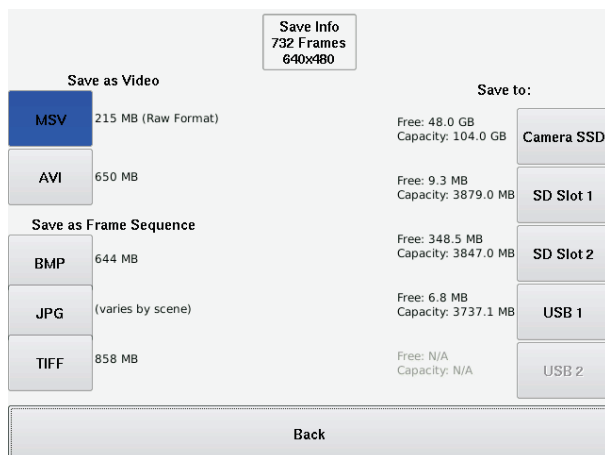
Auto-Download Options To Continuously Save Event Trigger Video From Your PLC



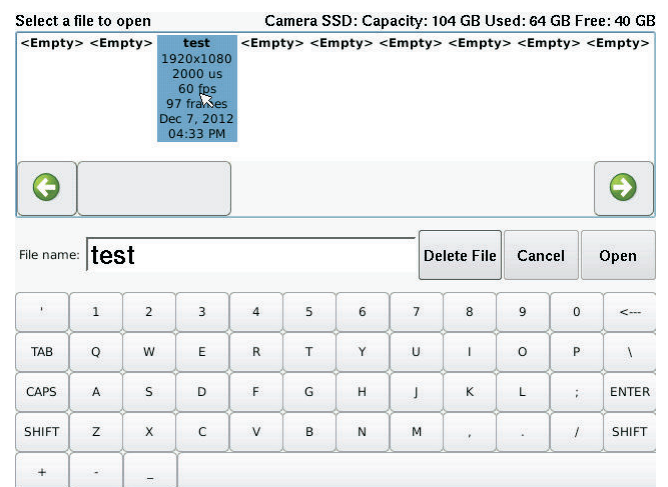
Save Right To The Cameras SSD For Extended Recording Times



Multiple Storage & File Saving Options



Easy to Manage File Location Menu





Polytec France S.A.S.
 Technosud II Bâtiment A
 99 Rue Pierre Semard
 92320 Châtillon
 Tel. +33 1 49 65 69 00
 info@polytec.fr

Contacts : PHOTONICS/VISION
 Elvis DZAMASTAGIC
 Tel. +33 1 49 65 69 07
 e.dzamastagic@polytec.fr

Christophe COURTOIS
 Tel. +33 1 49 65 69 03
 c.courtois@polytec.fr



**Polytec GmbH
 (Germany)**
 Polytec-Platz 1-7
 76337 Waldbronn
 Tel. +49 7243 604-0
 info@polytec.de

**Polytec GmbH
 (Germany)**
 Vertriebs- und
 Beratungsbüro
 Schwarzschildstraße 1
 12489 Berlin
 Tel. +49 30 6392-5140



**Polytec, Inc.
 (USA)**
 North American
 Headquarters
 16400 Bake Parkway
 Suites 150 & 200
 Irvine, CA 92618
 Tel. +1 949 943-3033
 info@polytec.com

Central Office
 1046 Baker Road
 Dexter, MI 48130
 Tel. +1 734 253-9428

East Coast Office
 25 South Street, Suite A
 Hopkinton, MA 01748
 Tel. +1 508 417-1040



Polytec Japan
 Arena Tower, 13th floor
 3-1-9, Shinyokohama
 Kohoku-ku, Yokohama-shi
 Kanagawa 222-0033
 Tel. +81 45 478-6980
 info@polytec.co.jp



**Polytec Ltd.
 (Great Britain)**
 Lambda House
 Batford Mill
 Harpenden, Herts AL5 5BZ
 Tel. +44 1582 711670
 info@polytec-ltd.co.uk



Polytec China Ltd.
 Room 1026, Hanwei Plaza
 No. 7 Guanghua Road
 Chaoyang District
 100004 Beijing
 Tel. +86 10 65682591
 info-cn@polytec.com



**Polytec South-East Asia
 Pte Ltd**
 Blk 4010 Ang Mo Kio
 Ave 10
 #06-06 TechPlace 1
 Singapore 569626
 Tel. +65 64510886
 info@polytec-sea.com