

Gooseneck Light Guides



Gooseneck light guide



Gooseneck light guide bifurcated



Combi light guide bifurcated

Features

- Flex and stay light guides.
- Part No. 170.402 with additional 800 mm flexible arm
- Black lacquered semi-rigid gooseneck tubing.
- Focusing optics with color filter option available.

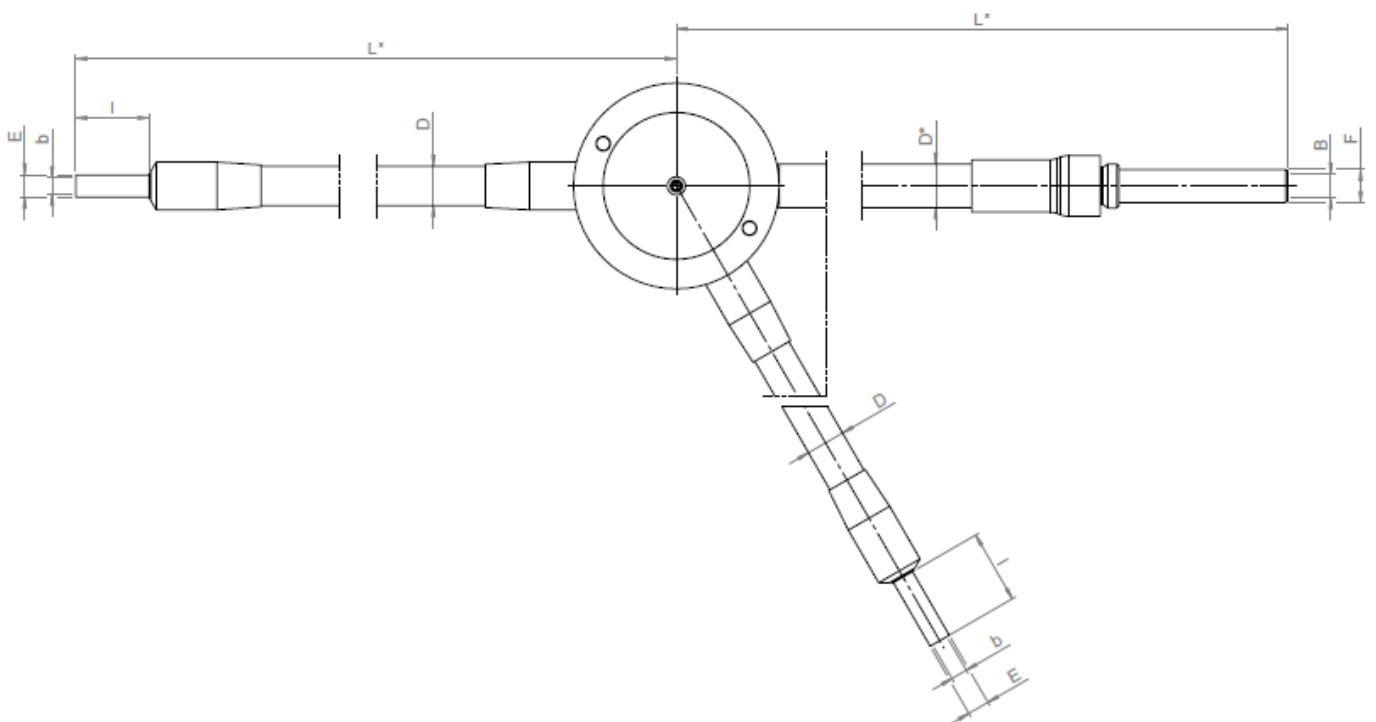
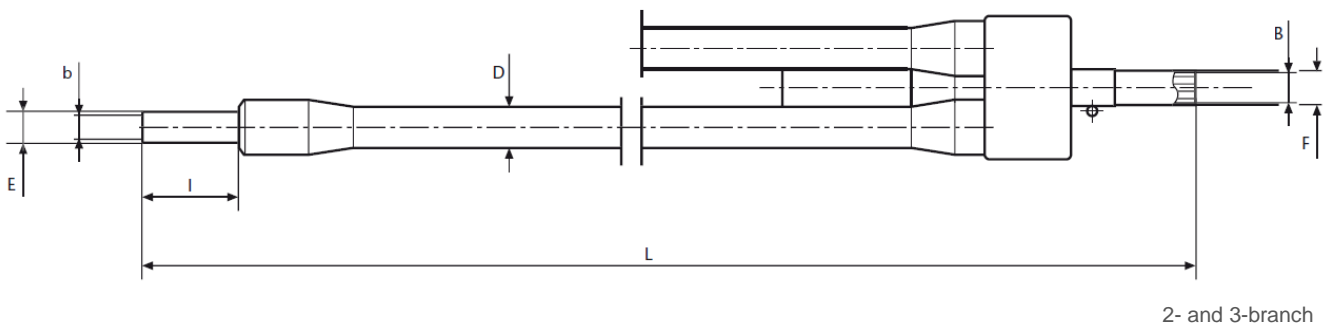
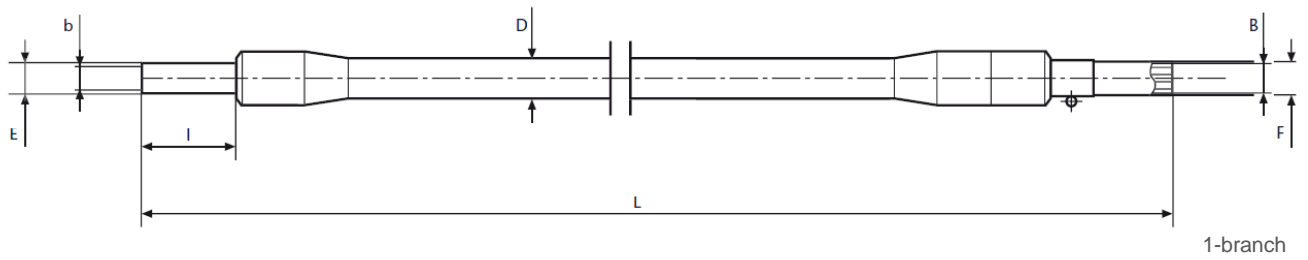
Benefits

- Precise positioning offers complete control of light placement.
- Gooseneck branches positioned in opposite directions create near shadow-free illumination.
- Re-adjust with ease.
- Dual models illuminate workspace with a single light source.
- Part No. 170.402 can be stationary fixed at the microscope post

Cold light source	Part No.	Type	Length	End tip Ø	End tip length	Active Ø branch	Active Common end Ø	Jacketing material	Outer Ø Jacketing	Light source adapter Ø
			(L)	(E)	(l)	(b)	(B)		(D)	(F)
KL 300 LED	170 101	1 branch	500 mm 19.69"	6 mm 0.24"	20 mm 0.79"	3.5 mm 0.14"	5 mm 0.20"	Flex & Stay	11 mm 0.43"	9 mm 0.35"
	170 202	2 branch	500 mm 19.69"	6 mm 0.24"	20 mm 0.79"	3.5 mm 0.14"	5 mm 0.20"		11 mm 0.43"	9 mm 0.35"
KL 1600 LED KL 2500 LED KL 1500 HAL KL 2500 LCD**	154 101	1 branch	600 mm 23.62"	6 mm 0.24"	20 mm 0.79"	4.5 mm 0.18"	4.5 mm 0.18"	Flex & Stay	11 mm 0.43"	10 mm 0.39"
	154 202	2 branch	600 mm 23.62"	6 mm 0.24"	20 mm 0.79"	4.5 mm 0.18"	6.4 mm 0.26"		11 mm 0.43"	10 mm 0.39"
	154 302	3 branch	600 mm 23.62"	6 mm 0.24"	20 mm 0.79"	4.5 mm 0.18"	7.8 mm 0.31"		11 mm 0.43"	10 mm 0.39"
KL 300 LED KL 1600 LED KL 2500 LED KL 1500 HAL KL 2500 LCD**	170402	2 branch plus 1 flexible	(L) 500 mm 19.69" (L*) 800 mm 31.50"	6 mm 0.24"	20 mm 0.79"	4.5 mm 0.18"	6.4 mm 0.26" randomized	Flex & Stay plus M-PVC	(D) 11 mm 0.43" (D*) 14 mm 0.55"	9 mm 0.35" and 10 mm 0.39"

** and discontinued KL 1500 products (KL 1500 compact, KL 1500 LCD, KL 1500 LED, KL 1500 LED Plus)

Gooseneck Light Guides



2-branch Combi light guide