

Polytec EC 101

Properties

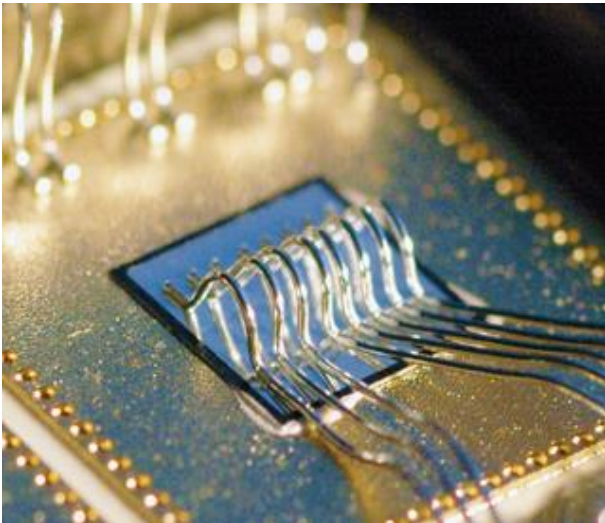
Polytec EC 101 is a standard two-component, solvent free, heat curing epoxy resin with a long pot life and excellent electrical conductivity.

It is used for high volume chip and substrate bonding, in micro-electronic, medical, hybrids and optoelectronic application.

Polytec EC 101 is certified to USP Class VI Biocompatibility Standards.

Polytec EC 101 can be cured at 95°C or in rapid cure cycles at higher temperatures.

The material can be applied by dispensing, jet-dispensing or manually.



Processing

- For two-component products the components A and B should be mixed carefully within the specified mixing ratio.
- For filled products both components should be homogenized carefully prior mixing, in order to prevent a possible settling of the filler.
- Processing should be carried out rapidly after mixing the components; as an indication the pot life can be used.
- Surfaces should be clean, thus free of dirt, grease, oil, dust or process chemicals.
- One-component products can be applied directly and are not subject to a pot life (except pre-mixed/frozen products).
- Please take notice of respective minimum curing temperature and time.
- For Safety information please refer to the respective Material Safety Data Sheet.

Polytec EC 101

Electrically Conductive Adhesive

Technical Data

Polytec EC 101

Properties in uncured state	Method	Unit	Technical Data
Chemical basis	-	-	Epoxy
No. of components	-	-	2
Mixing ratio (weight)	-	-	1:1
Mixing ratio (volume)	-	-	100:65
Pot life at 23°C	TM 702	h	48
Storage Stability at 6-8°C	TM 701	months	12
Consistency	TM 101	-	Creamy Paste
Density Mix	TM 201.2	g/cm ³	2.75
Density A-Part	TM 201.2	g/cm ³	2.17
Density B-Part	TM 201.2	g/cm ³	3.34
Type of filler	-	-	Silver
Max. particle size	-	µm	<30
Viscosity Mix 84 s ⁻¹ at 23°C	TM 202.1	mPa·s	12 000
Viscosity A-Part 84 s ⁻¹ at 23°C	TM 202.1	mPa·s	15 000
Viscosity B-Part 84 s ⁻¹ at 23°C	TM 202.1	mPa·s	11 000

Properties in cured* state	Method	Unit	Technical Data
Color	TM 101	-	Silver
Hardness (Shore D)	DIN EN ISO 868	-	85
Temperature resistance continuous	TM 302	°C	-55 / +200
Temperature resistance short term	TM 302	°C	-55 / +300
Degradation Temperature	TM 302	°C	+400
Glass Transition Temperature (T _g)	TM 501	°C	74
Coefficient of thermal expansion (<T _g)	ISO 11359-2	ppm	40
Coefficient of thermal expansion (>T _g)	ISO 11359-2	ppm	114
Thermal conductivity	-	W/m·K	1.3
Specific volume resistivity	DIN EN ISO 3915	Ω·cm	1 – 4 · 10 ⁻⁴
Electrical conductivity	DIN EN ISO 3915	S/m	1 – 0.25 · 10 ⁶
Elasticity modulus	TM 605	N/mm ²	7 000
Tensile Strength	TM 605	N/mm ²	34
Lap shear strength (Al/Al)	TM 604	N/mm ²	8.0
Elongation at break	TM 605	%	0.5
Water absorption 24 h, 23°C	TM 301	%	0.4

*The above data has been determined with samples cured at 150°C. Please notice, by varying the curing temperature these properties can be influenced to some extent.

Polytec EC 101

Curing*	Method	Unit	Technical Data
Minimum curing temperature		°C	95
Curing time at 100°C		min	50
Curing time at 120°C		min	15-20
Curing time at 130°C		min	7
Curing time at 150°C		min	3-4
Curing time at 180°C		s	60

*Curing temperatures refer to the temperature in the respective bond line. When choosing the respective curing conditions, the time needed to heat the substrate has to be considered. Depending on the type of heat source (convection oven, hot stamp, heating plate) the heat input may vary.

Standard pack sizes:

30 g, 250 g, 500 g

Customized Packaging

Please note:

The information listed above is typical data based on tests and is believed to be accurate. Polytec PT makes no warranties (expressed or implied) as to their accuracy. The data listed above does not constitute specifications. The processing (particularly the curing conditions) of the material, the process control, and the variety of different applications at various customers are not under Polytec PT's control. Therefore, Polytec PT will not be liable for concrete results in any specific application or in any connection with the use of this product. The curing conditions have a major effect on the properties of the cured material. Therefore, it is highly recommended to keep the curing schedule – once established - under tight control. With the release of this data sheet all former data sheets will be null and void.

Subject to alteration.

Polytec PT GmbH
 Polymere Technologien
 Ettlinger Straße 30
 76307 Karlsbad
 Germany
 Tel. +49 (0) 7243 604-4000
 Fax +49 (0) 7243 604-4200
 info@polytec-pt.de
<http://www.polytec-pt.de>

Polytec France S.A.S.
 TECHNOSUD II
 Bâtiment A
 99, Rue Pierre Semard
 92320 Châtillon - France
 Phone. +33 (0)1 49 65 69 00
 Fax +33 (0)1 57 19 59 60
 info@polytec.fr
<http://www.polytec-pt.com>

Polytec South-East Asia Pte Ltd
 Blk 4010 Ang Mo Kio Ave 10
 #06-06 Techplace I
 Singapore 569626
 Tel. +65 6451 0886
 Fax +65 6451 0822
 info@polytec-sea.com
<http://www.polytec-pt.com>